

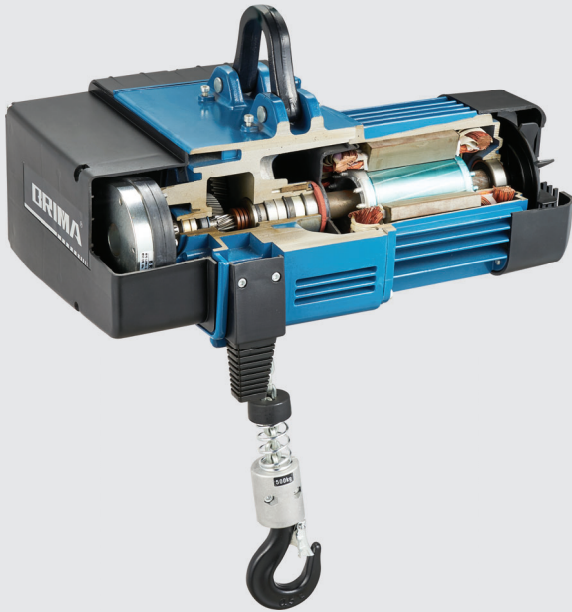
BMS SERIES

EUROPEAN TYPE ELECTRIC CHAIN HOIST



BMG SERIES

EUROPEAN TYPE ELECTRIC WIRE ROPE HOIST



Higher Performance & Faster

BMS electric chain hoist is manufactured with high performance, high safety, and high reliability design concept to increase a productivity and to perform the work to achieve the highest efficiency.

BMS 2-speed electric chain hoist is designed for more various hoisting applications.

Fast speed makes the work more efficient.

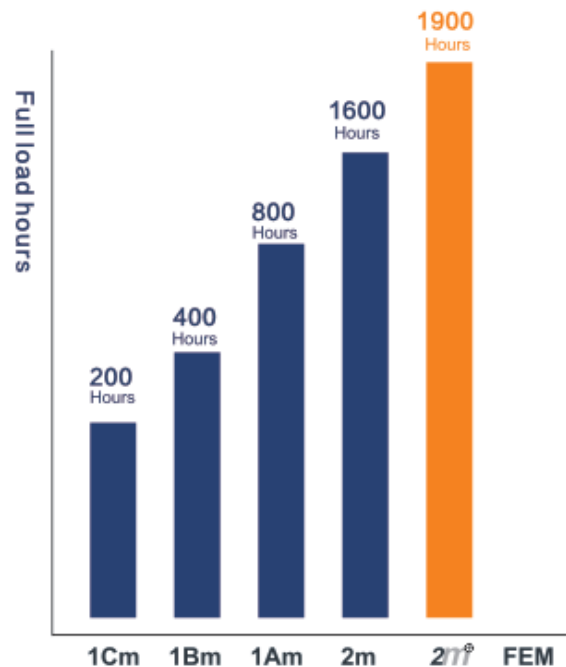
Slow speed makes the work more accurate.

Longer service life

BMS electric chain hoist's service life is extended by approx. 20% in comparison with the conventional 2m classification for FEM rating.

It results in significantly prolonged time between service intervals and general overhauls.

This extra operating life is only offered by BMS european electric chain hoist.



Maintenance: Fast and Simple

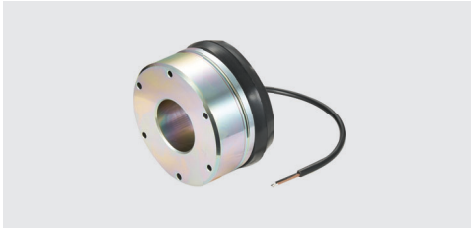
All BMS electric chain hoist's main drive components, such as gear box, brake and clutch, are made by a special process to improve them more durable. For example, BMS series brake is maintenance-free for 5 years. BRIMA hoist still has a long working life with high quality even with more frequent hoisting.

Because BMS european electric chain hoist is designed with ease of service concept, it can be maintained quicker and simpler.

The chain drive is designed as a compact unit which is slid into place, so it can be replaced in a minimum of time without the need to disassemble motor or gearbox parts. Long downtime as a result of maintenance work is not required anymore.

**Motor :**

The BMS hoist's motor has passed all relevant authority quality certification. The motor has very high-performance but compact size and light weight. The duty factor is up to 60% (40/20). The insulation class is class F. The speed of motor can reach up to 3,000 RPM.

**Brake :**

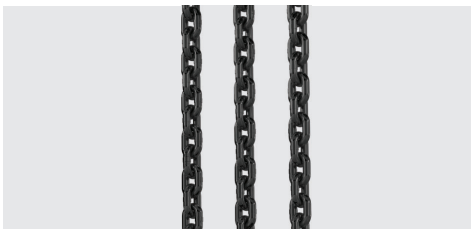
The lifting-hoist electromagnetic brake located at the end of transmission gear shaft is maintenance-free design, so its clearance is adjusted automatically. Its material does not contain Asbestos. The brake is completely enclosed and has high protection level to meet the requirements in harsh environment. Also, it is tested for 1 million times. The braking torque is 2 times of rated to motor torque.

**Slipping clutch :**

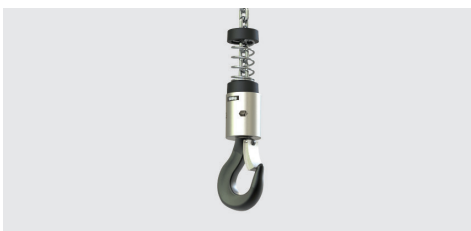
The slipping clutch, integrated on the transmission gear shaft, protects the overload lifting. The maintenance-free design can keep the torque up to 1.52 times of safe load, and the overload torque can be adjusted.

**Reduction gear :**

The reduction gear, helical gear design and lubricated in oil bath, makes high-transmission efficiency and low noise. The gear is put through heat treatment process after grinding, and its teeth are also surface hardened. Its accuracy is grade 7 or higher. So, it has ultra-long life, ultra-low noise, and efficient transmission.

**Load chain :**

The load chain is produced through an integrated manufacturing system under strict quality control. The superstrong and wear-resistant load chain is made from special alloy steel to achieve a high level of work safety.

**Bottom hook :**

The bottom hook is designed to be comfortable to hold and hang the load. The hook is forged and has excellent strength. It can be rotated 360 degrees. The specially designed safety catch ensures a safety operation.

**Housing :**

The body is made by high-strength alloy die-casting integrated molding to resist corrosion. The motor shell is made by plastic to reduce the weight and make heat dissipation better. Good sealing housing protects the hoist from dust and water - IP55.

**Pendant control :**

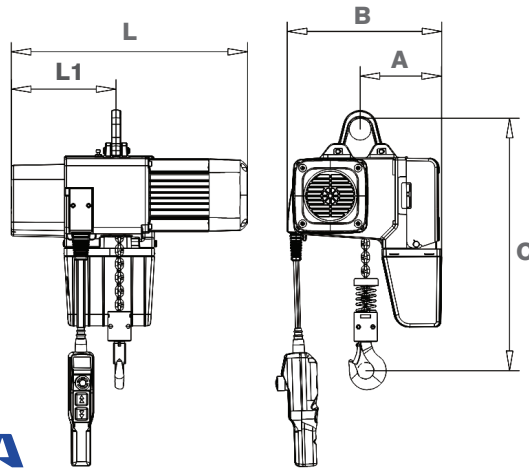
The pendant's control system uses low voltage and comes with an emergency stop to be safe for users. The weight is concentrated on wire rope which greatly improves cable life. Good sealing of pendant control protects dust and water - IP65.

BMS ELECTRIC CHAIN HOIST WITH SUSPENSION RING TYPE [125 kg - 5.0 Ton]



BRIMA
ENGLAND HOIST & CRANE

Technical Parameters



Main Characteristics

- Motor insulation : Class F
- Duty factor : 60%ED (40/20)
- Duty classification : FEM 2M / ISO M5
- Brake type : DC electromagnetic brake
- Overload protection : Slipping clutch
- Limit switch : Up and Down directions
- Lubrication : Oil bath
- Hoist protection grade : IP55
- Pendant control : 2 points with emergency
- Pendant control protection grade : IP65
- Control voltage : 24VAC
- Power voltage : 3P 380VAC 50Hz (Standard)
1P 220VAC 50Hz (Optional)



*Top hook is available as an optional.

Model	Rated Load (kg)	Lifting Speed (m/min)	Lifting Motor Output (kW)	Load Chain		Dimension (mm)					Net Weight (Lift 3 m) (kg)
				Dia. (mm)	No. of falls	L	L1	A	B	C	
BMS0.125-01M	125	2-Speed : 8 / 2	0.4 / 0.1	5.0	1	455	209	160	288	408	24
		2-Speed : 16 / 4	0.8 / 0.2	5.0	1	490	218	170	320	420	31
BMS0.25-01M	250	2-Speed : 8 / 2	0.4 / 0.1	5.0	1	455	209	160	288	408	24
		2-Speed : 12 / 3	0.8 / 0.2	5.0	1	490	218	170	320	420	31
		2-Speed : 16 / 4	1.8 / 0.45	7.1	1	564	254	182	343	516	56
BMS0.5-02M	500	2-Speed : 4 / 1	0.4 / 0.1	5.0	2	455	209	160	288	491	35
BMS0.5-01M	500	2-Speed : 8 / 2	0.8 / 0.2	5.0	1	490	218	170	320	420	31
		2-Speed : 12 / 3	1.8 / 0.45	7.1	1	564	254	182	343	516	56
		2-Speed : 16 / 4	2.3 / 0.6	7.1	1	641	254	182	343	516	68
		1-Speed : 8	0.8	5.0	1	490	218	170	320	420	31
BMS01-02M	1,000	2-Speed : 4 / 1	0.8 / 0.2	5.0	2	490	218	170	320	503	35
BMS01-01M	1,000	2-Speed : 8 / 2	1.8 / 0.45	7.1	1	564	254	182	343	516	56
		2-Speed : 12 / 3	2.3 / 0.6	7.1	1	641	254	182	343	516	68
		1-Speed : 8	1.8	7.1	1	564	254	182	343	516	56
BMS02-02M	2,000	2-Speed : 4 / 1	1.8 / 0.45	7.1	2	564	289	182	343	615	65
BMS02-01M	2,000	2-Speed : 8 / 2	3.6 / 0.9	10.0	1	741	361	268	503	609	126
		1-Speed : 8	3.6	10.0	1	741	361	268	503	609	126
BMS03-02M	3,000	2-Speed : 4 / 1	3.6 / 0.9	10.0	2	741	361	268	503	731	140
BMS05-02M	5,000	2-Speed : 4 / 1	4.0 / 1.0	11.3	2	741	361	268	503	755	150

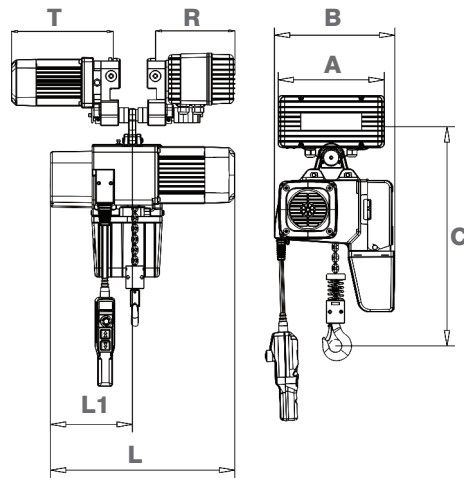
*Height of lift can be changed upon the usage

*For other lifting speed, Please contact our sale department.

BMS ELECTRIC CHAIN HOIST WITH ELECTRIC TROLLEY [125 kg - 5.0 Ton]



Technical Parameters



Main Characteristics

- Motor insulation : Class F
- Duty factor : 60%ED (40/20)
- Duty classification : FEM 2M / ISO M5
- Brake type : DC electromagnetic brake
- Overload protection : Slipping clutch
- Limit switch : Up and Down directions
- Lubrication : Oil bath
- Hoist protection grade : IP55
- Pendant control : 4 points with emergency
- Pendant control protection grade : IP65
- Control voltage : 24VAC
- Power voltage : 3P 380VAC 50Hz
- Travelling beam width : 75 - 200 mm
- Traveling speed :
 - 1-speed : 18 or 12 m/min. (Standard)
 - 2-speed : 5 / 20 m/min. (Inverter)

Model	Rated Load (kg)	Lifting Speed (m/min)	Lifting Motor Output (kW)	Load Chain		Traversing Motor Output (kW)	Dimension (mm)						Net Weight (Lift 3 m) (kg)	
				Dia. (mm)	No. of falls		L	L1	T	R	A	B		C
BMS0.125-01MET	125	2-Speed : 8 / 2	0.4 / 0.1	5.0	1	0.4	455	209	271	211	282	288	478	41
		2-Speed : 16 / 4	0.8 / 0.2	5.0	1		490	218	271	211	282	320	490	48
BMS0.25-01MET	250	2-Speed : 8 / 2	0.4 / 0.1	5.0	1		455	209	271	211	282	288	478	41
		2-Speed : 12 / 3	0.8 / 0.2	5.0	1		490	218	271	211	282	320	490	48
		2-Speed : 16 / 4	1.8 / 0.45	7.1	1		564	254	282	206	293	343	579	84
BMS0.5-02MET	500	2-Speed : 4 / 1	0.4 / 0.1	5.0	2		455	209	271	211	282	288	478	52
BMS0.5-01MET	500	2-Speed : 8 / 2	0.8 / 0.2	5.0	1		490	218	271	211	282	320	490	48
		2-Speed : 12 / 3	1.8 / 0.45	7.1	1		564	254	282	206	293	343	579	84
		2-Speed : 16 / 4	2.3 / 0.6	7.1	1		641	254	282	206	293	343	579	96
		1-Speed : 8	0.8	5.0	1		490	218	271	211	282	320	490	48
BMS01-02MET	1,000	2-Speed : 4 / 1	0.8 / 0.2	5.0	2		490	218	282	206	282	320	573	63
BMS01-01MET	1,000	2-Speed : 8 / 2	1.8 / 0.45	7.1	1		564	254	282	206	293	343	579	84
		2-Speed : 12 / 3	2.3 / 0.6	7.1	1		564	254	282	206	293	343	579	96
		1-Speed : 8	1.8	7.1	1		564	254	282	206	293	343	579	84
BMS02-02MET	2,000	2-Speed : 4 / 1	1.8 / 0.45	7.1	2	564	289	282	206	330	343	685	100	
BMS02-01MET	2,000	2-Speed : 8 / 2	3.6 / 0.9	10.0	1	741	361	284	207	330	503	668	161	
		1-Speed : 8	3.6	10.0	1	741	361	284	207	330	503	668	161	
BMS03-02MET	3,000	2-Speed : 4 / 1	3.6 / 0.9	10.0	2	741	361	350	239	340	503	793	172	
BMS05-02MET	5,000	2-Speed : 4 / 1	4.0 / 1.0	11.3	2	741	361	356	222	400	503	812	205	

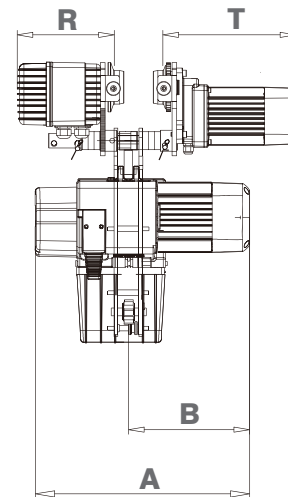
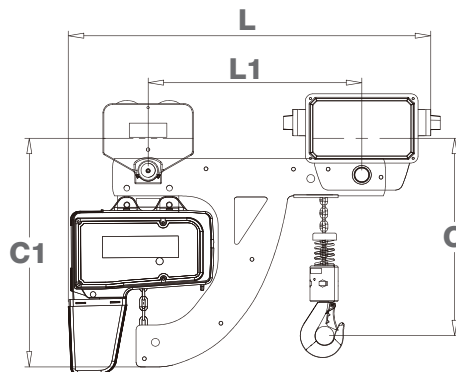
*Height of lift can be changed upon the usage

*For other lifting speed, Please contact our sale department.

LOW-HEADROOM TYPE BMS ELECTRIC CHAIN HOIST WITH ELECTRIC TROLLEY [250 kg - 8.0 Ton]



Technical Parameters



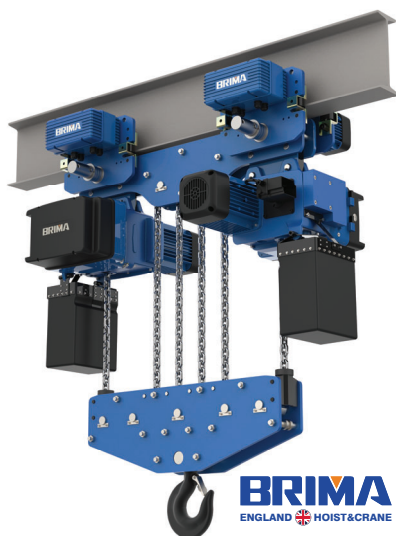
Main characteristics

- Motor insulation : Class F
- Duty : 60%ED (40/20), FEM 2M / ISO M5
- Brake type : DC electromagnetic brake
- Overload protection : Slipping clutch
- Limit switch : Up and Down directions
- Lubrication : Oil bath
- Hoist protection grade : IP55
- Pendant control : 4 points with emergency
- Pendant control protection grade : IP65
- Control voltage : 24VAC
- Power voltage : 3P 380VAC 50Hz
- Travelling beam width :
 - 250 kg - 5.0 Ton : 100 - 180 mm
 - 8.0 Ton : 150 - 180 mm
- Traveling speed :
 - 1-speed : 18 or 12 m/min. (Standard)
 - 2-speed : 5 / 20 m/min. (Inverter)

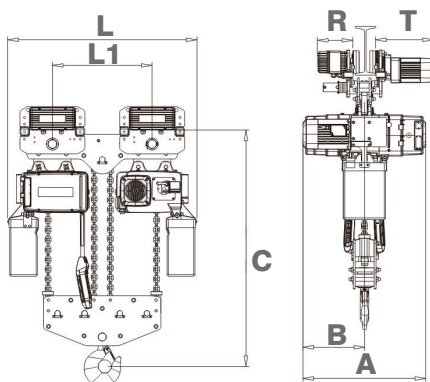
Model	Rated Load (kg)	Lifting Speed (m/min)	Lifting Motor Output (kW)	Load Chain		Traversing Motor Output (kW)	Dimension (mm)							Note	
				Dia. (mm)	No. of falls		L	L1	T	R	A	B	C		C1
BMS0.25-01ML	250	2-Speed : 8 / 2	0.8 / 0.2	5.0	1	0.4	770	453	271	211	490	257	330	490	
BMS0.5-01ML	500	2-Speed : 8 / 2	0.8 / 0.2	5.0	1		770	453	271	211	490	257	330	490	
BMS01-02ML	1,000	2-Speed : 4 / 1	0.8 / 0.2	5.0	2		770	453	282	206	490	257	410	490	
BMS01-01ML	1,000	2-Speed : 8 / 2	1.8 / 0.45	7.1	1	0.55	863	548	282	206	630	292	375	630	
BMS02-02ML	2,000	2-Speed : 4 / 1	1.8 / 0.45	7.1	2		891	548	284	207	630	292	485	630	
BMS02-01ML	2,000	2-Speed : 8 / 2	3.6 / 0.9	10.0	1	1.1	1123	680	284	207	720	380	391	720	
BMS2.5-01ML	2,500	2-Speed : 8 / 2	4.0 / 1.0	11.3	1		1185	745	350	239	720	380	429	720	
BMS03-02ML	3,000	2-Speed : 4 / 1	3.6 / 0.9	10.0	2		1185	745	350	239	720	380	508	720	
BMS05-02ML	5,000	2-Speed : 4 / 1	4.0 / 1.0	11.3	2	1.1	1245	775	356	222	720	380	543	720	
BMS08-03ML	8,000	2-Speed : 4 / 1	2.7 / 0.9	11.3	3		1444	966	356	222	741	381	653	735	

*Height of lift can be changed upon the usage

BMS ELECTRIC CHAIN HOIST WITH TROLLEY TYPE [10.0 Ton - 20.0 Ton]



Technical Parameters



Main Characteristics

- Motor insulation : Class F
- Duty factor : 60%ED (40/20)
- Duty classification : FEM 2M / ISO M5
- Brake type : DC electromagnetic brake
- Overload protection : Slipping clutch
- Limit switch : Up and Down directions
- Lubrication : Oil bath
- Hoist protection grade : IP55
- Pendant control : 4 points with emergency
- Pendant control protection grade : IP65
- Control voltage : 24VAC
- Power voltage : 3P 380VAC 50Hz
- Travelling beam width : 150 - 180 mm
- Traveling speed :
 - 1-speed : 18 or 12 m/min.
 - 2-speed : 5 / 20 m/min. (Inverter)

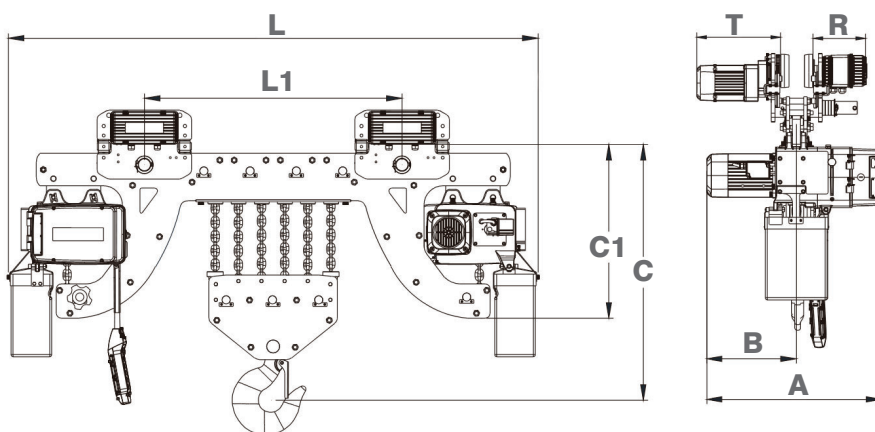
Model	Rated Load (kg)	Lifting Speed (m/min)	Lifting Motor Output (kW)	Load Chain		Traversing Motor Output (kW)	Dimension (mm)							Note
				Dia. (mm)	No. of falls		L	L1	T	R	A	B	C	
BMS10-04MET	10,000	2-Speed : 4 / 1	2 x 4.0 / 1.0	11.3	4	2 x 1.1	1185	632	356	222	757	378	962	
BMS16-06MET	16,000	2-Speed : 2.7 / 0.9	2 x 4.0 / 1.0	11.3	6	2 x 1.1	1421	868	361	225	757	378	1024	
BMS20-08MET	20,000	2-Speed : 2 / 0.5	2 x 4.0 / 1.0	11.3	8	2 x 1.1								

*Height of lift can be changed upon the usage

LOW-HEADROOM TYPE BMS ELECTRIC CHAIN HOIST WITH TROLLEY TYPE [10.0 Ton - 20.0 Ton]



Technical Parameters



Model	Rated Load (kg)	Lifting Speed (m/min)	Lifting Motor Output (kW)	Load Chain		Traversing Motor Output (kW)	Dimension (mm)								Note
				Dia. (mm)	No. of falls		L	L1	T	R	A	B	C	C1	
BMS10-04ML	10,000	2-Speed : 4 / 1	2 x 4.0 / 1.0	11.3	4	2 x 1.1	2049	895	356	222	741	381	670	735	
BMS16-06ML	16,000	2-Speed : 2.7 / 0.9	2 x 4.0 / 1.0	11.3	6	2 x 1.1	2245	1090	356	225	741	381	805	735	
BMS20-08ML	20,000	2-Speed : 2 / 0.5	2 x 4.0 / 1.0	11.3	8	2 x 1.1	2450	1290	361	226	741	381	836	757	

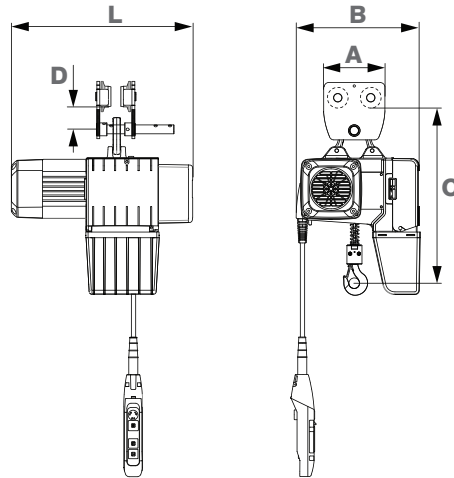
*Height of lift can be changed upon the usage

BMS ELECTRIC CHAIN HOIST WITH MANUAL TROLLEY [125 kg - 5.0 Ton]



BRIMA
ENGLAND HOIST & CRANE

Technical Parameters



Main Characteristics

- Motor insulation : Class F
- Duty factor : 60%ED (40/20)
- Duty classification : FEM 2M / ISO M5
- Brake type : DC electromagnetic brake
- Overload protection : Slipping clutch
- Limit switch : Up and Down directions
- Lubrication : Oil bath
- Hoist protection grade : IP55
- Pendant control : 2 points with emergency
- Pendant control protection grade : IP65
- Control voltage : 24VAC
- Power voltage : 3P 380VAC 50Hz
- Travelling beam width : 75 - 200 mm

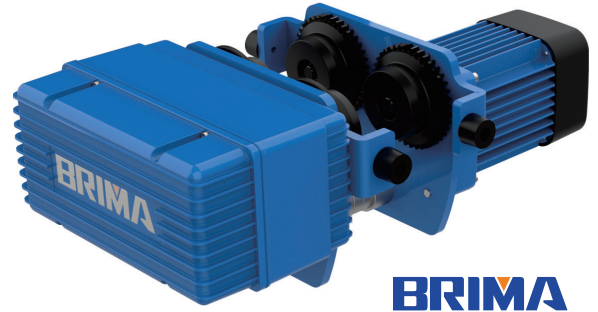
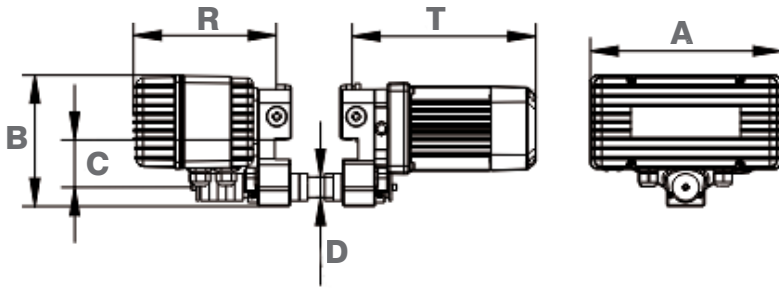
Model	Rated Load (kg)	Lifting Speed (m/min)	Lifting Motor Output (kW)	Load Chain		Dimension (mm)					Net Weight (Lift 3 m) (kg)
				Dia. (mm)	No. of falls	L	A	B	C	D	
BMS0.125-01MMT	125	2-Speed : 8 / 2	0.4 / 0.1	5.0	1	455	192	288	478	70	31
		2-Speed : 16 / 4	0.8 / 0.2	5.0	1	490	192	320	490	70	38
BMS0.25-01MMT	250	2-Speed : 8 / 2	0.4 / 0.1	5.0	1	455	192	288	478	70	31
		2-Speed : 12 / 3	0.8 / 0.2	5.0	1	490	192	320	490	70	38
		2-Speed : 16 / 4	1.8 / 0.45	7.1	1	564	293	343	579	78	71
BMS0.5-02MMT	500	2-Speed : 4 / 1	0.4 / 0.1	5.0	2	455	192	288	561	70	42
BMS0.5-01MMT	500	2-Speed : 8 / 2	0.8 / 0.2	5.0	1	490	192	320	490	70	38
		2-Speed : 12 / 3	1.8 / 0.45	7.1	1	564	293	343	579	78	71
		2-Speed : 16 / 4	2.3 / 0.6	7.1	1	641	293	343	579	78	83
		1-Speed : 8	0.8	5.0	1	490	192	320	490	70	38
BMS01-02MMT	1,000	2-Speed : 4 / 1	0.8 / 0.2	5.0	2	490	192	320	573	70	50
BMS01-01MMT	1,000	2-Speed : 8 / 2	1.8 / 0.45	7.1	1	564	293	343	579	78	71
		2-Speed : 12 / 3	2.3 / 0.6	7.1	1	564	293	343	579	78	83
		1-Speed : 8	1.8	7.1	1	564	293	343	579	78	71
BMS02-02MMT	2,000	2-Speed : 4 / 1	1.8 / 0.45	7.1	2	564	330	343	685	74	88
BMS02-01MMT	2,000	2-Speed : 8 / 2	3.6 / 0.9	10.0	1	741	330	503	668	74	149
		1-Speed : 8	3.6	10.0	1	741	330	503	668	74	149
BMS03-02MMT	3,000	2-Speed : 4 / 1	3.6 / 0.9	10.0	2	741	340	503	793	71	172
BMS05-02MMT	5,000	2-Speed : 4 / 1	4.0 / 1.0	11.3	2	741	400	503	812	86	205

*Height of lift can be changed upon the usage

*For other lifting speed, Please contact our sale department.

BMS ELECTRIC TROLLEY

Technical Parameters

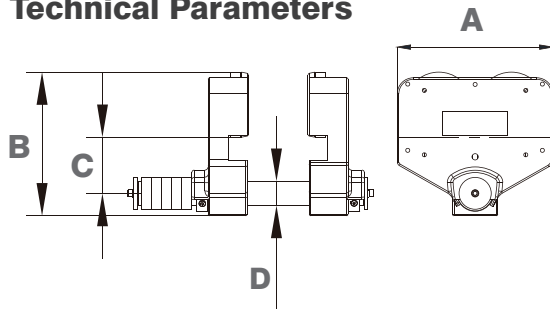


BRIMA
ENGLAND HOIST & CRANE

Model	Rated Load (kg)	Traversing Speed (m/min)		Motor Output (kW)	Dimension (mm)						I-Beam Width (mm)	Net Weight (kg)
		Single	Dual (Inverter)		A	B	C	D	T	R		
ET-0.5	500	Fast : 18 Slow : 12	5 / 20	0.4	282	193	70	30	271	211	75 - 200	17
ET-01	1,000	Fast : 18 Slow : 12	5 / 20	0.4	293	201	78	31	282	206	75 - 200	28
ET-02	2,000	Fast : 18 Slow : 12	5 / 20	0.55	330	217	74	36	284	207	75 - 200	35
ET-03	3,000	Fast : 18 Slow : 12	5 / 20	1.1	340	250	71	43	350	239	75 - 200	55
ET-05	5,000	Fast : 18 Slow : 12	5 / 20	1.1	400	291	86	54	356	222	75 - 200	76

BMS MANUAL TROLLEY

Technical Parameters



BRIMA
ENGLAND HOIST & CRANE

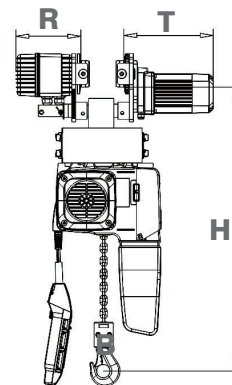
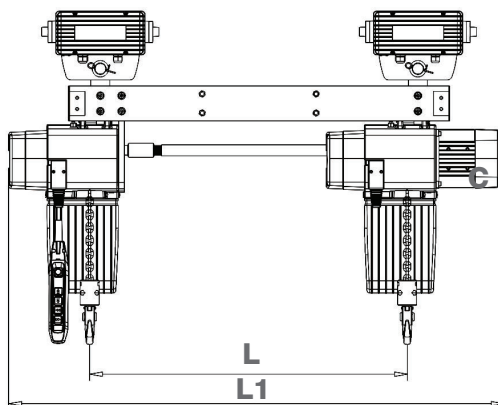
Model	Rated Load (kg)	Dimension (mm)				I-Beam width (mm)	Net Weight (kg)
		A	B	C	D		
MT-0.5	500	192	193	70	30	75 - 200	7
MT-01	1,000	293	201	78	31	75 - 200	15
MT-02	2,000	330	217	74	36	75 - 200	23
MT-03	3,000	340	250	71	43	75 - 200	32
MT-05	5,000	400	291	86	54	75 - 200	55

DOUBLE HOOK TYPE BMS ELECTRIC CHAIN HOIST WITH ELECTRIC TROLLEY [125 kg - 1.0 Ton]



BRIMA
ENGLAND HOIST & CRANE

Technical Parameters



Model	Rated Load (kg)	Lifting Speed (m/min)	Lifting Motor Output (kW)	Load Chain		Traversing Motor Output (kW)	Dimension (mm)					Note
				Dia. (mm)	No. of falls		L	L1	T	R	H	
BMS0.125-01MD	125+125	2-Speed : 8 / 2	0.8 / 0.2	5.0	1	0.4	Upon Request	L+490	271	211	570	
BMS0.25-01MD	250+250	2-Speed : 8 / 2	0.8 / 0.2	5.0	1			L+490	271	211	570	
BMS0.5-02MD	500+500	2-Speed : 4 / 1	0.8 / 0.2	5.0	2			L+490	271	211	653	
BMS0.5-01MD	500+500	2-Speed : 8 / 2	1.8 / 0.45	7.1	1			L+565	282	206	671	
BMS01-02MD	1,000+1,000	2-Speed : 4 / 1	1.8 / 0.45	7.1	2	0.55		L+565	284	207	770	

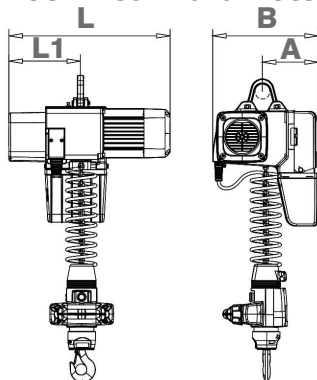
*Height of lift can be changed upon the usage

HAND CONTROL TYPE BMS ELECTRIC CHAIN HOIST WITH SUSPENSION RING TYPE [125 kg - 500 kg]



BRIMA
ENGLAND HOIST & CRANE

Technical Parameters



Main Characteristics

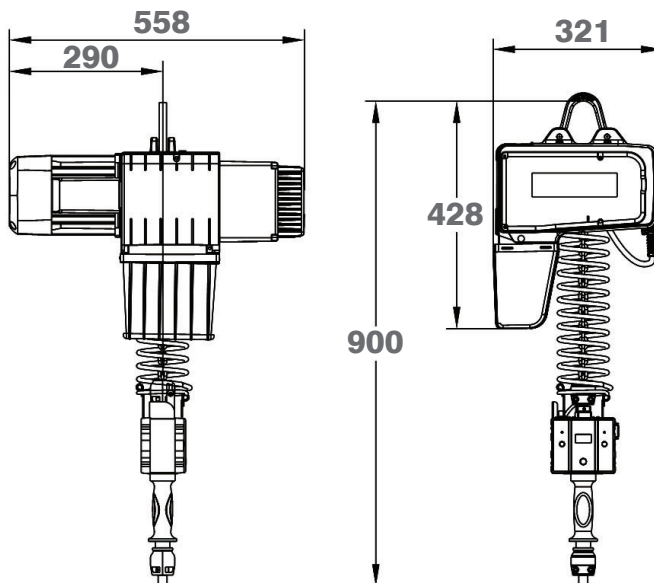
- Motor insulation : Class F
- Duty : 60%ED (40/20), FEM 2M / ISO M5
- Brake type : DC electromagnetic brake
- Overload protection : Slipping clutch
- Limit switch : Up and Down directions
- Lubrication : Oil bath
- Hoist protection grade : IP55
- Pendant control : 2 points with emergency
- Pendant control protection grade : IP65
- Control voltage : 24VAC
- Power voltage : 3P 380VAC 50Hz

Model	Rated Load (kg)	Lifting Speed (m/min)	Lifting Motor Output (kW)	Load Chain		Dimension (mm)				Note
				Dia. (mm)	No. of falls	L	L1	A	B	
BMS0.125-01MH	125	2-Speed : 8 / 2	0.4 / 0.1	5.0	1	511	265	159	288	
		2-Speed : 16 / 4	0.8 / 0.2	5.0	1	541	271	170	320	
BMS0.25-01MH	250	2-Speed : 8 / 2	0.4 / 0.1	5.0	1	511	265	159	288	
		2-Speed : 12 / 3	0.8 / 0.2	5.0	1	541	271	170	320	
BMS0.5-01MH	500	2-Speed : 8 / 2	0.8 / 0.2	5.0	1	541	271	170	320	

BMS ELECTRIC CHAIN HOIST WITH BALANCE FUNCTION [80 kg - 500 kg]



Technical Parameters



Main Features

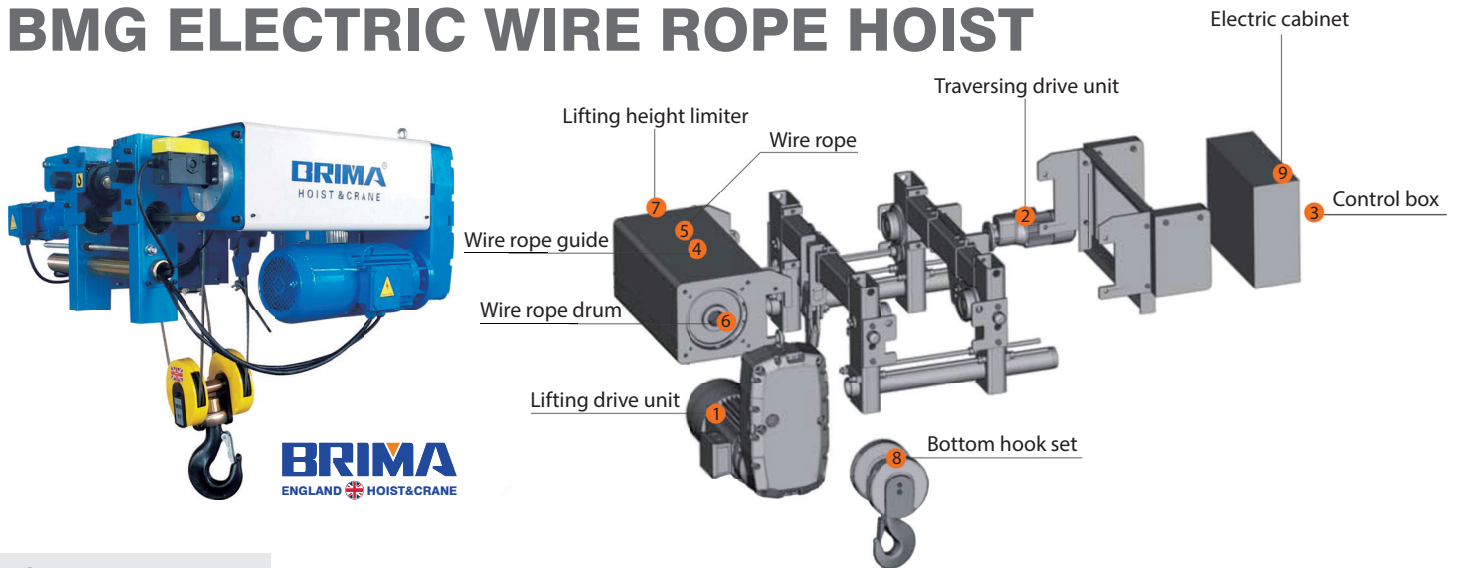
- Handle control mode
 - controlled by sliding hand grip (Up/Down)
- Load positioning control mode
 - controlled by holding the load by hand and applying light force to hoisting or lowering
- Inhibit any load swing and uncontrolled movement, so the operation has a very high safety and precision.

Main Characteristics

- Motor insulation : Class F
- Duty classification:
 - 80 kg - 250 kg : FEM 4M / ISO M7
 - 500 kg : FEM 2M / ISO M5
- Brake type : DC electromagnetic brake
- Overload protection : Slipping clutch
- Limit switch : Up and Down Directions
- Lubrication : Oil bath
- Hoist Protection grade : IP55
- Pendant control : Hand grip with emergency
- Power Voltage : 1P 220VAC 50Hz

Model	Rated Load (kg)	Maximum Lifting Speed (m/min)	Lifting Motor Output (kW)	Load Chain		Note
				Dia. (mm)	No. of falls	
BMS-ZNL80	80	20	1.1	5.0	1	
BMS-ZNL125	125	20	1.1	5.0	1	
BMS-ZNL250	250	16	1.1	5.0	1	
BMS-ZNL500	500	8	1.1	5.0	1	

BMG ELECTRIC WIRE ROPE HOIST



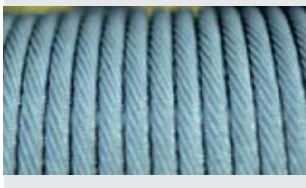
Lifting and Traversing drive unit :

The BMG's motor with reduction gear box has high-performance and compact structure. But it consumes low energy, and has low noise. The duty factor is up to 60% (40/20). Due to asbestos-free brake, service life can be up to 1 million times. High protection grade of brake can meet the requirements of severe environment.



Wire rope guide :

The guide is light weight and wear resistance designed, to reduce the wear of wire rope. The guide prevents wire rope from skipping and losing to off-groove.



Wire rope :

The BMG hoist use high performance wire rope which has tensile strength up to 2,160 MPa. The surface is galvanized for corrosion prevention effectively. Also, the high flexibility structure of wire rope ensure wear resistance and prolong its service life.



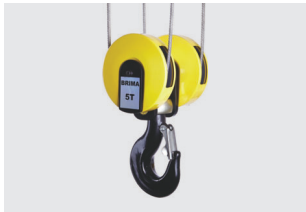
Wire rope drum :

The drum is produced with Q345 seamless steel tube and a number of working procedure to ensure concentricity of the drum. The depth of groove is in compliance with FEM standard. High-strength pressing plates and bolts are fastened on the end of wire rope for safety.



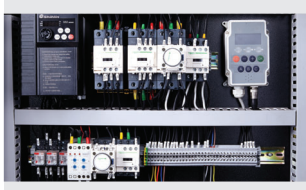
Lifting height limiter :

The limiter can be wide range adjusted with high precision. Multiple-contact configurations can effectively achieve the function of transition (lifting and lowering with low and high speed).



Bottom hook set :

The bottom hook is forged by the high-strength material of T grade. The hook with safety latch and wire rope sheath ergonomic design is in compliance with DIN standard.



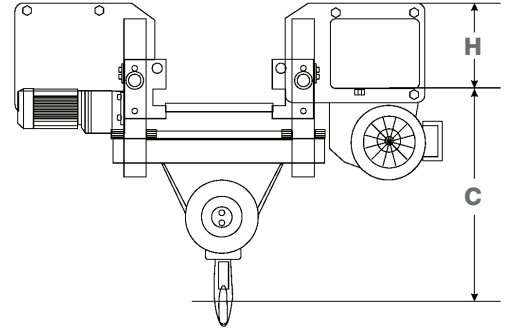
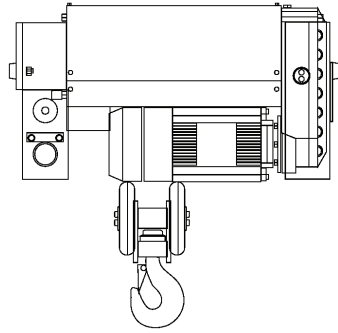
Electric control box :

All of the electrical components is high quality and reliable. Multiple safety protection devices are added to ensure more safety. The design with clear identification makes it easy to troubleshoot. Good sealing housing protects the control circuit from dust and water - IP55.

BMG ELECTRIC WIRE ROPE HOIST (SINGLE GIRDER) [3.2 Ton - 12.5 Ton]



Technical Parameters



Model	Rated Load (kg)	Lifting Height (m)	Lifting Speed (m/min)	Lifting Motor Output (kW)	Lifting Duty Class.	Traversing Speed (m/min)	Traversing Motor Output (kW)	Traversing Duty Class.	Dimension (mm)		Beam Width (mm)
									H	C	
BMG-3.2S	3,200	6.0	2-Speed : 5 / 0.8	3.2 / 0.45	FEM 2M ISO M5	1-Speed : 5 - 20	0.64 (Inverter)	FEM 3M ISO M6	188	696	150 - 300
		9.0									
		12.0									
		15.0									
		18.0									
BMG-5.0S	5,000	6.0	2-Speed : 5 / 0.8	6.1 / 1.0	FEM 2M ISO M5	1-Speed : 5 - 20	0.64 (Inverter)	FEM 2M ISO M5	178	696	200 - 350
		9.0									
		12.0									
		15.0									
		18.0									
BMG-6.3S	6,300	6.0	2-Speed : 5 / 0.8	6.1 / 1.0	FEM 2M ISO M5	1-Speed : 5 - 20	0.64 (Inverter)	FEM 2M ISO M5	178	696	200 - 350
		9.0									
		12.0									
		15.0									
		18.0									
BMG-8.0S	8,000	6.0	2-Speed : 5 / 0.8	9.5 / 1.5	FEM 2M ISO M5	1-Speed : 5 - 20	0.96 (Inverter)	FEM 3M ISO M6	325	790	200 - 410
		9.0									
		12.0									
		15.0									
		18.0									
BMG-10.0S	10,000	6.0	2-Speed : 5 / 0.8	9.5 / 1.5	FEM 2M ISO M5	1-Speed : 5 - 20	0.96 (Inverter)	FEM 2M ISO M5	325	790	200 - 410
		9.0									
		12.0									
		15.0									
		18.0									
BMG-12.5S	12,500	6.0	2-Speed : 5 / 0.8	12.5 / 2.0	FEM 1M ISO M4	1-Speed : 5 - 20	0.96 (Inverter)	FEM 1M ISO M4	325	790	200 - 410
		9.0									
		12.0									
		15.0									
		18.0									

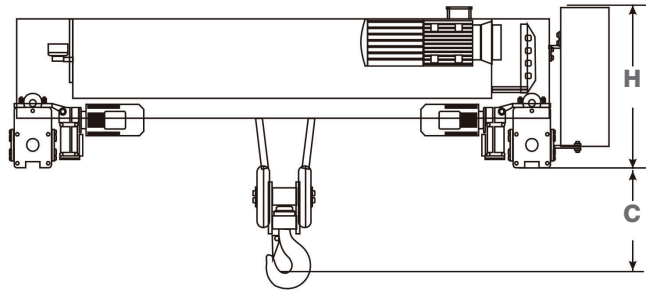
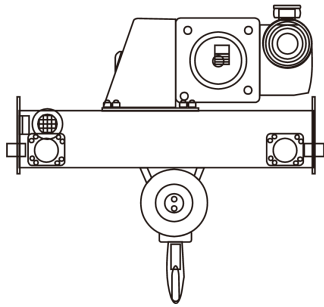
BMG ELECTRIC WIRE ROPE HOIST (DOUBLE GIRDER) [3.2 Ton - 50.0 Ton]



Model	Rated Load (kg)	Lifting Height (m)	Lifting Speed (m/min)	Lifting Motor Output (kW)	Lifting Duty Class.	Traversing Speed (m/min)	Traversing Motor Output (kW)	Traversing Duty Class.	Dimension (mm)		Min. Rail Gauge (mm)
									H	C	
BMG-3.2D	3,200	6.0	2-Speed : 5 / 0.8	3.2 / 0.45	FEM 2M ISO M5	1-Speed : 5 - 20	0.64 x 2 (Inverter)	FEM 3M ISO M6	475	450	1,200
		9.0									1,200
		12.0									1,400
		15.0									1,400
		18.0									1,700
BMG-5.0D	5,000	6.0	2-Speed : 5 / 0.8	6.1 / 1.0	FEM 2M ISO M5	1-Speed : 5 - 20	0.64 x 2 (Inverter)	FEM 2M ISO M5	475	490	1,200
		9.0									1,200
		12.0									1,400
		15.0									1,400
		18.0									1,700
BMG-6.3D	6,300	6.0	2-Speed : 5 / 0.8	6.1 / 1.0	FEM 2M ISO M5	1-Speed : 5 - 20	0.64 x 2 (Inverter)	FEM 2M ISO M5	475	490	1,200
		9.0									1,200
		12.0									1,400
		15.0									1,400
		18.0									1,700
BMG-8.0D	8,000	6.0	2-Speed : 5 / 0.8	9.5 / 1.5	FEM 2M ISO M5	1-Speed : 5 - 20	0.96 x 2 (Inverter)	FEM 3M ISO M6	562	580	1,200
		9.0									1,400
		12.0									1,700
		15.0									1,700
		18.0									2,000
BMG-10.0D	10,000	6.0	2-Speed : 5 / 0.8	9.5 / 1.5	FEM 2M ISO M5	1-Speed : 5 - 20	0.96 x 2 (Inverter)	FEM 2M ISO M5	562	580	1,200
		9.0									1,400
		12.0									1,700
		15.0									1,700
		18.0									2,000
BMG-12.5D	12,500	6.0	2-Speed : 5 / 0.8	12.5 / 2.0	FEM 1M ISO M4	1-Speed : 5 - 20	0.96 x 2 (Inverter)	FEM 2M ISO M5	562	580	1,200
		9.0									1,400
		12.0									1,700
		15.0									1,700
		18.0									2,000

BMG ELECTRIC WIRE ROPE HOIST (DOUBLE GIRDER) [3.2 Ton - 50.0 Ton]

Technical Parameters

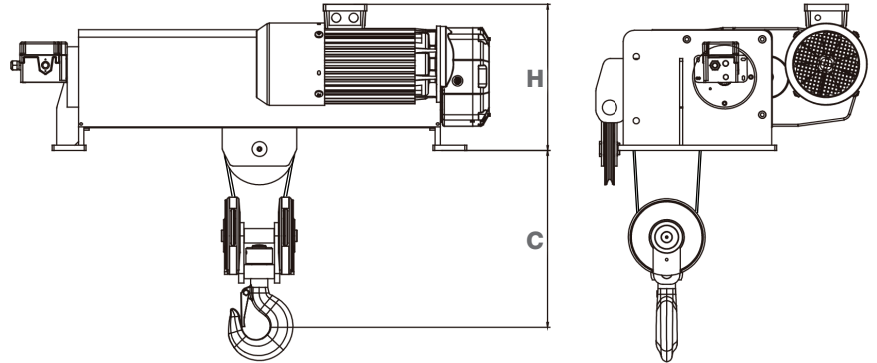


Model	Rated Load (kg)	Lifting Height (m)	Lifting Speed (m/min)	Lifting Motor Output (kW)	Lifting Duty Class.	Traversing Speed (m/min)	Traversing Motor Output (kW)	Traversing Duty Class.	Dimension (mm)		Min. Rail Gauge (mm)
									H	C	
BMG-16.0D	16,000	6.0	2-Speed : 4 / 0.6	16.0 / 2.6	FEM 2M ISO M5	1-Speed : 5 - 20	0.96 x 2 (Inverter)	FEM 3M ISO M6	760	890	1,400
		9.0									1,400
		12.0									1,700
		15.0									2,000
		18.0									2,400
BMG-20.0D	20,000	6.0	2-Speed : 4 / 0.6	16.0 / 2.6	FEM 1M ISO M4	1-Speed : 5 - 20	0.96 x 2 (Inverter)	FEM 2M ISO M5	760	890	1,400
		9.0									1,400
		12.0									1,700
		15.0									2,000
		18.0									2,400
BMG-25.0D	25,000	6.0	2-Speed : 3.3 / 0.8	20.0 / 5.0	FEM 3M ISO M6	1-Speed : 5 - 20	1.1 x 2 (Inverter)	FEM 3M ISO M6	990	900	1,700
		9.0									2,000
		12.0									2,400
		15.0									2,800
		18.0									3,100
BMG-32.0D	32,000	6.0	2-Speed : 3.3 / 0.8	20.0 / 5.0	FEM 2M ISO M5	1-Speed : 5 - 20	1.1 x 2 (Inverter)	FEM 2M ISO M5	990	900	1,700
		9.0									2,000
		12.0									2,400
		15.0									2,800
		18.0									3,100
BMG-40.0D	40,000	6.0	1-Speed : 0.8 - 4.9	38.0 (Inverter)	FEM 1M ISO M4	1-Speed : 5 - 20	1.5 x 2 (Inverter)	FEM 2M ISO M5	990	980	2,000
		9.0									2,200
		12.0									2,500
		15.0									2,800
		18.0									3,100
BMG-50.0D	50,000	6.0	1-Speed : 0.53 - 3.2	38.0 (Inverter)	FEM 2M ISO M5	1-Speed : 5 - 20	1.5 x 2 (Inverter)	FEM 2M ISO M5	990	1,060	2,200
		9.0									2,700
		12.0									3,100
		15.0									3,600
		18.0									4,000

BMG ELECTRIC WIRE ROPE HOIST (FIXED TYPE) [3.0 Ton - 5.0 Ton]



Technical Parameters



Main Characteristics

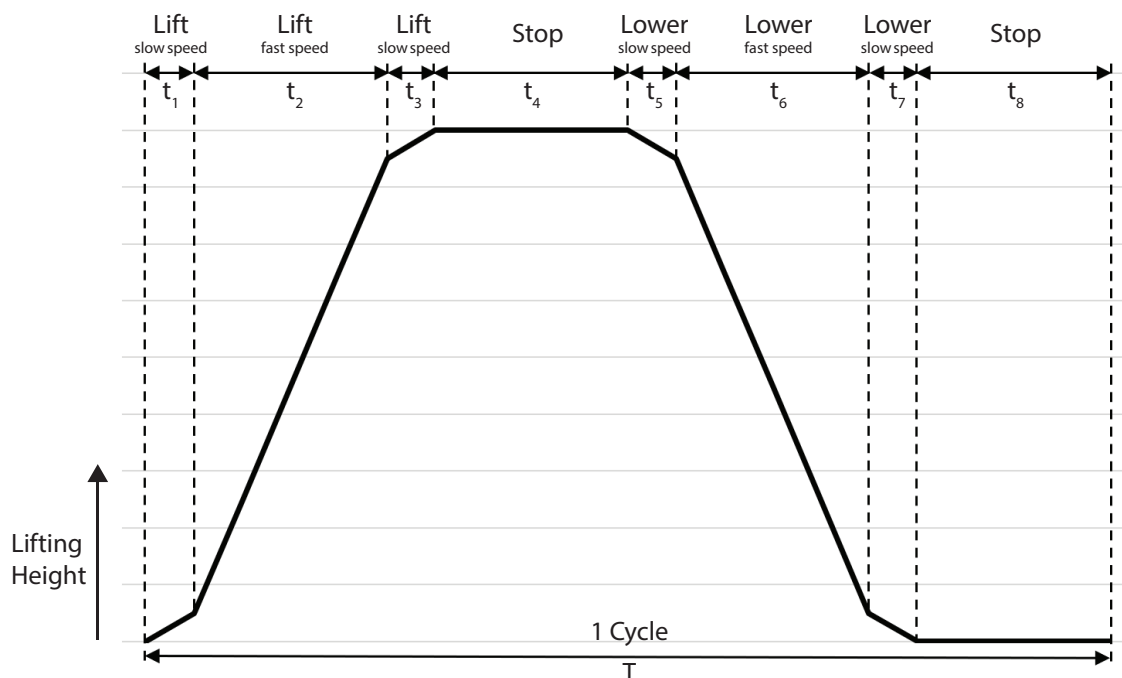
- Motor insulation : Class F
- Duty factor : 60%ED (40/20)
- Duty classification : FEM 2M / ISO M5
- Brake type : DC electromagnetic brake
- Limit switch : 2-step (low/high speed)
- Hoist protection grade : IP55
- Pendant control : 2 points with emergency
- Pendant control protection grade : IP65
- Control voltage : 24VAC
- Power voltage : 3P 380VAC 50Hz

Model	Rated Load (kg)	Lifting Height (m)	Lifting Speed (m/min)	Lifting Motor Output (kW)	Dimension (mm)		Note
					H	C	
BMF-3.2	3,000	6.0	2-Speed : 10 / 1.6	6.1 / 1.0	400	650	
		9.0					
		12.0					
		15.0					
		18.0					
BMF-5.0	5,000	6.0	2-Speed : 10 / 1.6	9.5 / 1.5	510	780	
		9.0					
		12.0					
		15.0					
		18.0					

FEM (9.511) rating :

Load Condition	Average Load ratio	Calculated total operating time (hours)						
		400	800	1,600	3,200	6,300	12,500	25,000
		Average operating time per day (hours)						
		≤0.25	≤0.5	≤1.0	≤2.0	≤4.0	≤8.0	≤16.0
L1 : Light	$K \leq 0.50$	-	1 Dm	1 Cm	1 Bm	1 Am	2 m	3 m
L2 : Medium	$0.50 < K \leq 0.63$	1 Dm	1 Cm	1 Bm	1 Am	2 m	3 m	4 m
L3 : Heavy	$0.63 < K \leq 0.80$	1 Cm	1 Bm	1 Am	2 m	3 m	4 m	5 m
L4 : Severe	$0.80 < K \leq 1.00$	1 Bm	1 Am	2 m	3 m	4 m	5 m	-

%ED rating :



$$\%ED = \frac{(\text{Motor ON time})}{(\text{1 Cycle})}$$

Example : 1Cycle = 1 hour, 60%ED (40/20)

$$\%ED (1^{\text{st}} \text{ speed}) = (t_1 + t_3 + t_5 + t_7) / T$$

Slow speed ON time = 12 minutes

$$\%ED (2^{\text{st}} \text{ speed}) = (t_2 + t_6) / T$$

Fast speed ON time = 24 minutes

$$\%ED = (t_1 + t_2 + t_3 + t_5 + t_6 + t_7) / T$$

Both speed ON time = 36 minutes

$$\text{OFF time / rest time} = t_4 + t_8$$

OFF time / rest time = 24 minutes

Model Code (Electric Chain Hoist) :

BMS 01 - 02 MET

Type

M : with suspension ring / top hook
MET : with electric trolley
MMT : with manual trolley
ML : low-headroom type
MD : double hook type
MH : hand control type

No. of chain falls

01 : 1 fall
02 : 2 falls
04 : 4 falls
06 : 6 falls

Capacity

0.125 : 125 kg
0.5 : 500 kg
01 : 1.0 ton
05 : 5.0 ton

Model

BMS : European type electric chain hoist



Model Code (Electric Wire Rope Hoist) :

BMG - 5.0 S

Type

S : Single girder Type
D : Double girder type
- : Fixed type

Capacity

3.2 : 3.2 ton
5.0 : 5.0 ton
16.0 : 16.0 ton
50.0 : 50.0 ton

Model

BMG : European type electric wire rope hoist with electric trolley
BMF : European type electric wire rope hoist



Contact :



BRIMA (ENGLAND) HOIST & CRANE LTD
Chase Business Centre, 39-41 Chase Side, London, England, N14 5BP